

Manoharbhai Shikshan Prasarak Mandal Armori's



**MAHATMA GANDHI ARTS, SCIENCE &
LATE NASARUDDINBHAI PANJWANI COMMERCE
COLLEGE ARMORI**

Dist. Gadchiroli (Maharashtra) 441 208

Affiliated to Gondwana University, Gadchiroli.

Re-accredited by NAAC 'A' with 3.02 CGPA

ANNUAL QUALITY ASSURANCE REPORT

AQAR : 2020-2021

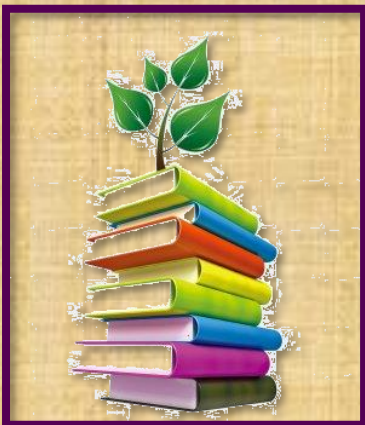
CRITERION – VI

Governance, Leadership and Management

METRIC NO: ~ 6.2.1

METRIC NAME: ~The institutional Strategic/perspective

plan is effectively deployed



**Web: - mgcollegearmori.ac.in
e-mail: - mgcollege.armori@gmail.com
Phone: - 07137-266558**

AQAR :2020-21: Criteria-VI – Governance Leadership and Management

CRITERION -VI
GOVERNANCE, LEADERSHIP AND MANAGEMENT

Dear Sir/ Madam,

Due to the size of documents that's exceeded 6Mb, we are unable to upload relevant documents on the NAAC portal. So, we are sharing the required documents through our institution's website. The links are provided below.

6.2.1 - The institutional Strategic/ perspective plan is effectively deployed

Sr. No	Name of the documents	Link of the relevant documents
1.	Ph. D. Admission Online link	http://www.mgcollegearmori.ac.in/files/Brochure_PhD_Admission_2020-21.pdf